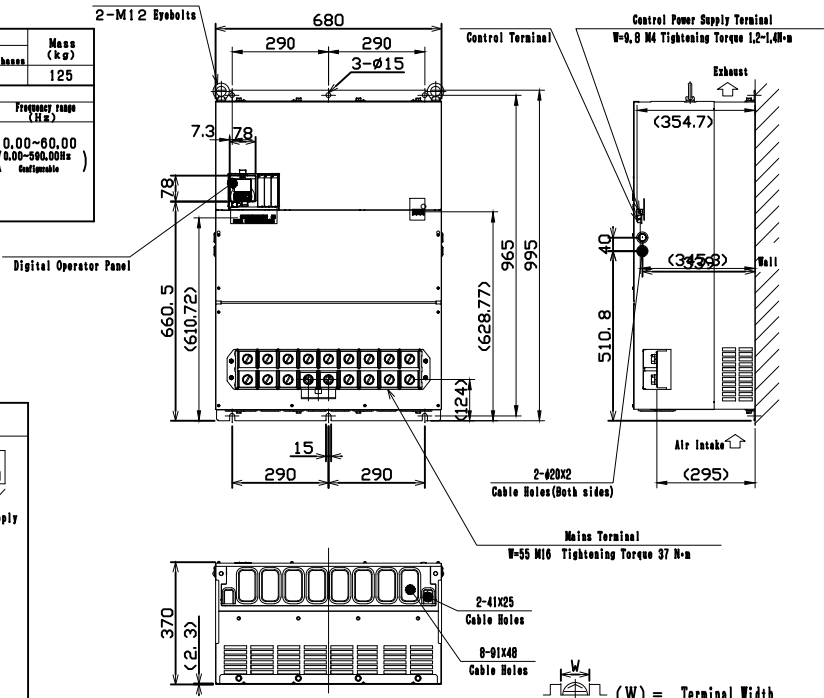


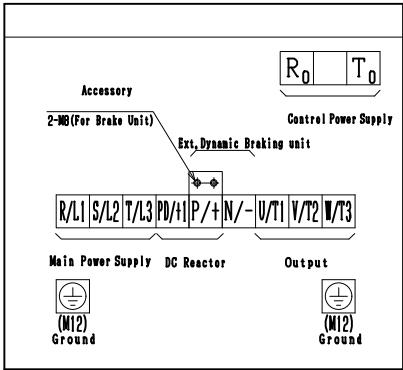
INVERTER MODEL LIST	
ITEM NO.	MODEL NUMBER
1	P1-05500-HF

INVERTER						
Model	Input		Number of Phases	Mass (kg)		
	Voltage (V)	Frequency (Hz)				
P1-05500-HFF (P1-2500HFF)	380~500	50/60	3	125		
VLD	Output		Current (A)	Frequency range (Hz)		
	Capacity (kVA)	Voltage (V)				
	361.9/476.3 (380V/500V)	380~500			550	0.00~60.00 (0.00~500.00Hz Selectable)
	329.0/433.0 (380V/500V)	380~500			500	



PROPRIETARY AND CONFIDENTIAL

THE INFORMATION CONTAINED IN THIS DRAWING IS THE SOLE PROPERTY OF HIESA. ANY REPRODUCTION IN PART OR AS A WHOLE WITHOUT THE WRITTEN PERMISSION OF HIESA IS PROHIBITED.



USE				DIMENSION in mm	
NOTICE	ENCLOSURE	SPECIFICATION	ATTACHED	DRAWING NO.	PROJECTION
This product does not conform to functional safety standards.	IP20/UL 999 Type	SHEET	NOT ATTACHED		

A. Saito	Mar-29-2019
A. Hasebe	Mar-27-2019
A. Hirata	Mar-27-2019

DIMENSION	4
	3T854860

UNLESS OTHERWISE SPECIFIED: DIMENSIONS ARE IN MM/INCHES GENERAL TOLERANCES ACCORDING TO ISO 2768-MH-E	NAME	DATE	HITACHI INDUSTRIAL EQUIPMENT & SOLUTIONS AMERICA LLC TITLE: P1-05500-HF
	UPDATED	MIG 11AUG21	
	CHECKED		
	ENG APPR.		
INTERPRET GEOMETRIC TOLERANCING PER:	Q.A.		SIZE DWG. NO.
MATERIAL	COMMENTS:		
FINISH			REV A
	SCALE:	WEIGHT:	SHEET 1 OF 1