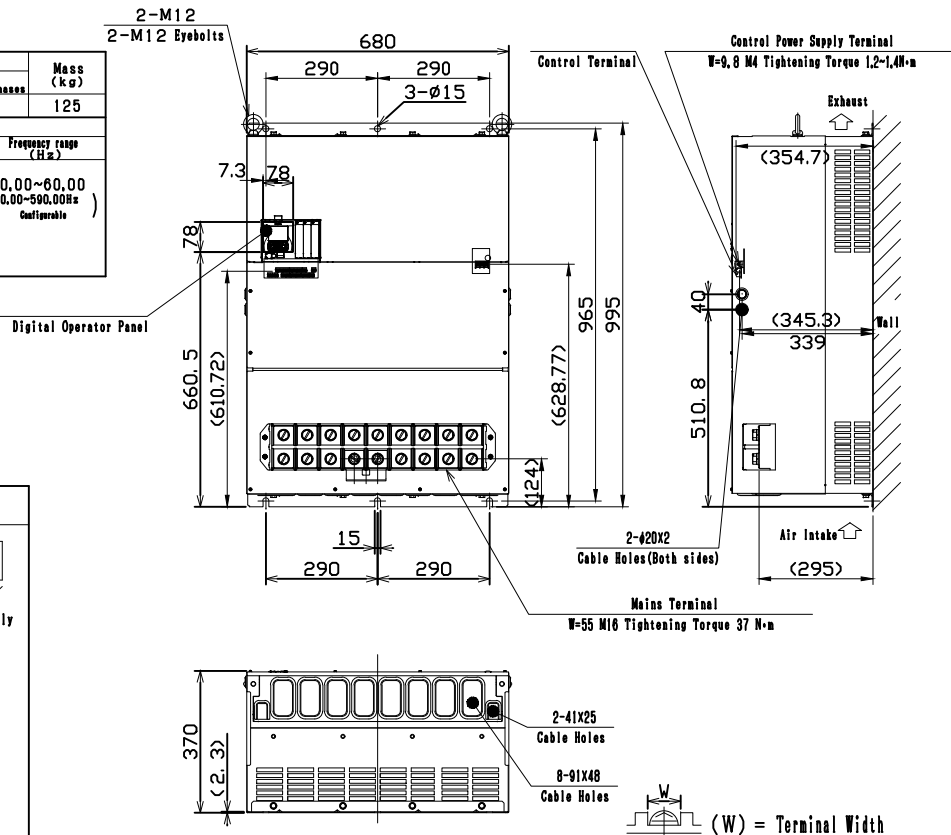


INVERTER MODEL LIST	
ITEM NO.	MODEL NUMBER
1	P1-04860-HF

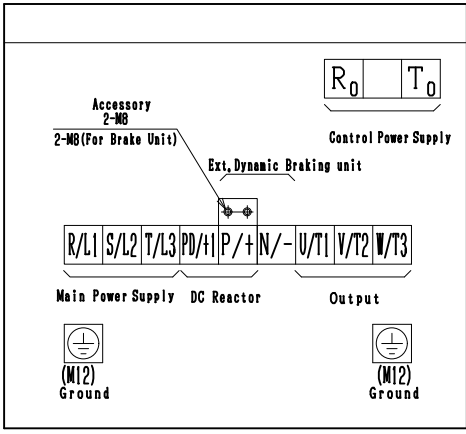
INVERTER

Model	Input			Mass (kg)
	Voltage (V)	Frequency (Hz)	Number of phases	
P1-04860-HFF (P1-2000HFF)	380~500	50/60	3	125
Output				
	Capacity (kVA)	Voltage (V)	Current (A)	Frequency range (Hz)
VLD	319.8/420.8 (380V/500V)	380~500	486	0.00~60.00 (0.00~500.00Hz CosφVariable)
LD	293.5/386.2 (380V/500V)		446	
ND	266.5/350.7 (380V/500V)		405	



PROPRIETARY AND CONFIDENTIAL

THE INFORMATION CONTAINED IN THIS DRAWING IS THE SOLE PROPERTY OF HIESA. ANY REPRODUCTION IN PART OR AS A WHOLE WITHOUT THE WRITTEN PERMISSION OF HIESA IS PROHIBITED.



DIMENSION in mm			
USE			PROJECTION
NOTICE	ENCLOSURE 1P20/UL 0001 TYPE	SPECIFICATION SHEET	ATTACHED DRAWING NO.
This product does not conform to functional safety standards.			NOT ATTACHED

N. Saito	Mar-13-2018
N. Hanano	Mar-13-2018
N. Hirata	Apr-15-2018

DIMENSION

3T854858

9

UNLESS OTHERWISE SPECIFIED: DIMENSIONS ARE IN MM/INCHES GENERAL TOLERANCES ACCORDING TO ISO 2768-MH-E	UPDATED	NAME	DATE	HITACHI INDUSTRIAL EQUIPMENT & SOLUTIONS AMERICA LLC TITLE: P1-04860-HF	
	CHECKED	MIG	11AUG21		
	ENG APPR.				
	MFG APPR.				
INTERPRET GEOMETRIC TOLERANCING PER:	Q.A.			SIZE DWG. NO.	
MATERIAL	COMMENTS:				REV A
FINISH					
SCALE:		WEIGHT:	SHEET 1 OF 1		